



Canton Park

Get The App

The HC2 ferry line (Canton Park) has 2 routes. For regular weekdays, their operation hours are:

(1) Canton Park: 5:15 AM - 6:45 PM (2) Locust Point: 5:00 AM - 6:30 PM

Use the Moovit App to find the closest HC2 ferry station near you and find out when is the next HC2 ferry arriving.

Direction: Canton Park

2 stops

[VIEW LINE SCHEDULE](#)

Locust Point

Canton Waterfront Park

HC2 ferry Time Schedule

Canton Park Route Timetable:

Sunday	Not Operational
Monday	5:15 AM - 6:45 PM
Tuesday	5:15 AM - 6:45 PM
Wednesday	5:15 AM - 6:45 PM
Thursday	5:15 AM - 6:45 PM
Friday	5:15 AM - 6:45 PM
Saturday	Not Operational

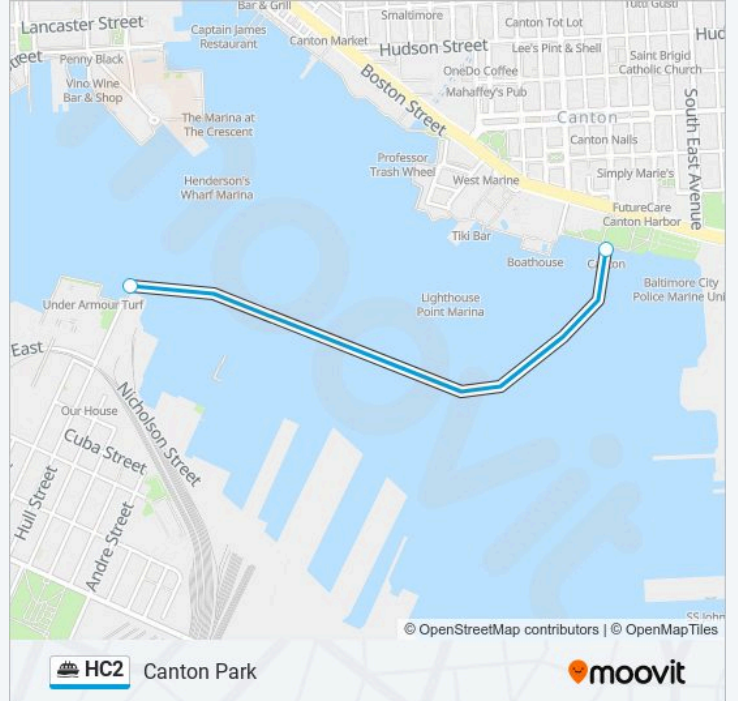
HC2 ferry Info

Direction: Canton Park

Stops: 2

Trip Duration: 15 min

Line Summary:



Direction: Locust Point

2 stops

[VIEW LINE SCHEDULE](#)

Canton Waterfront Park

Locust Point

HC2 ferry Time Schedule

Locust Point Route Timetable:

Sunday	Not Operational
Monday	5:00 AM - 6:30 PM
Tuesday	5:00 AM - 6:30 PM
Wednesday	5:00 AM - 6:30 PM
Thursday	5:00 AM - 6:30 PM
Friday	5:00 AM - 6:30 PM
Saturday	Not Operational

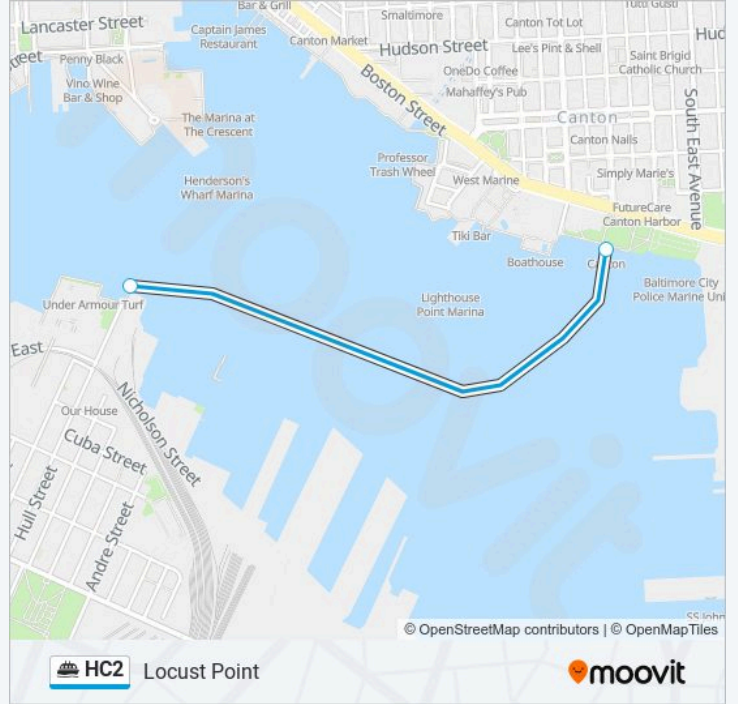
HC2 ferry Info

Direction: Locust Point

Stops: 2

Trip Duration: 15 min

Line Summary:



HC2 ferry time schedules and route maps are available in an offline PDF at moovitapp.com. Use the Moovit App to see live bus times, train schedule or subway schedule, and step-by-step directions for all public transit in Washington, D.C. - Baltimore, MD.

© 2024 Moovit - All Rights Reserved